

ROTARY EVAPORATOR



STRIKE®

ΔΙΑ•М
современная лаборатория

www.dia-m.ru
заказ on-line



ROTARY EVAPORATOR



STRIKE[®]100

STRIKE100 is a large-capacity rotary evaporator designed for industrial plants. It meets all the process needs by using Borosilicate glass and PTFE permitting aggressive substances treatment.

The unit works under vacuum or atmosphere conditions. The rotation of the 50 or 100 lt evaporation flask in the thermostatic bath results in a forced convection and homogenous distribution of the product, thus preventing sedimentation. Moreover, it ensures high evaporating exchange surface. The sealing system guarantees the perfect vacuum tightness and maintenance-free operation. Possibility to customize glassware as for Clients needs.

APPLICATIONS

- Distillation (continuous and discontinuous)
- Solvent recycling
- Reflux process reactions
- Component drying
- Fine chemical synthesis
- Crystallization

FIELDS

- Pharmaceutical
- Chemical
- Cosmetic
- Herb extraction
- Petrochemical



TOTAL SAFETY SYSTEM

The industrial safety rotary evaporators are able to safeguard the user from any risk during work. The thermostatic bath is covered by a transparent shield providing the operator with utmost protection from glass breaking and spray at high temperature. The thermostatic bath and the protective shield are lifted by means of a hydraulic system electronically controlled. An automatic system lowers the thermostatic bath when a power failure, door opening and overheating occur. It is also inserted on glassware a brake disc in order to avoid sudden overpressure.

VACUUM SEALING SYSTEM

A great feature of these rotary evaporators is its sealing system made of self-lubricating material which allows a perfect vacuum-tight. This sealing system does not require any maintenance.

HEATING BATH

The heating bath is lifted by means of a hydraulic system which, in case of power failure or doors opening, goes automatically down to avoid fluid overheating and the process will immediately stop. Electric heater enhanced to 8Kw to ensure a continuous evaporation of the product even in the worst conditions.

DISPLAY

The process operating conditions can be set and displayed: any value error or anomalous temperature will block the electric power. For STRIKE100 ATEX version is a "LCD display anti-reflectio coating glass panel" . For version STRIKE100 is a graphical color display 7" touch-screen



ROTARY EVAPORATOR



STRIKE®

ELECTRONIC CONTROLLER

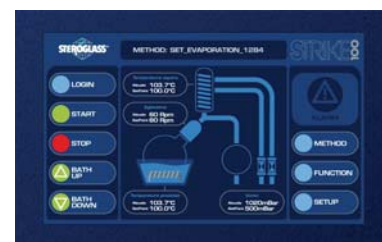
Strike100 e STRIKE100ATEX are fully controlled by a PLC (Programmable Logic Controller) which allows for controlling the parameters as well as setting them directly by means of the keys.

Client could acquire on an external PC through serial communication all the process parameters through special software for data acquisition and management. Client could remotely control the instrument from an external PC via serial communication. Client could save and recall up to 20 methods or "recipes" work that the customer can customize over time (NOT ON ATEX VERSION). In addition, the instrument has control algorithms that allow you to finish the process of evaporation / distillation or separation of solvents automatically by reading the temperature of the vapors.



PARAMETERS MEASUREMENT, VISUAL DISPLAY AND RECORDING OF THE FOLLOWING:

- Bath pre-set and real temperature
- Vapor pre-set and real temperature
- Pre-set and real rotation speed
- Pre-set and real vacuum reading and setting



HOW TO ORDER

Code	STRIKE 100
	100 lt version
SQFU069840	100lt reflux glassware 1,43m ² 2x20lt
SQFU069841	100lt reflux glassware 1,43m ² 1x20lt
SQFU069842	100lt descending glassware 100lt 1,43m ² 2x20lt
SQFU069843	100lt descending glassware 100lt 1,43m ² 1x20lt
	50 lt version
SQFU069844	50lt reflux glassware 1,43m ² 2x20lt
SQFU069845	50lt reflux glassware 1,43m ² 1x20lt
SQFU069846	50lt descending glassware 1,43m ² 2x20lt
SQFU069847	50lt descending glassware 1,43m ² 1x20lt

Code	STRIKE 100 ATEX *
	100 lt version
SQFU069848	100lt reflux glassware 1,43m ² 2x20lt
SQFU069849	100lt reflux glassware 1,43m ² 1x20lt
SQFU069850	100lt descending glassware 100lt 1,43m ² 2x20lt
SQFU069851	100lt descending glassware 1,43m ² 1x20lt
	50 lt version
SQFU069852	50lt reflux glassware 1,43m ² 2x20lt
SQFU069853	50lt reflux glassware 1,43m ² 1x20lt
SQFU069854	50lt descending glassware 1,43m ² 2x20lt
SQFU069855	50lt descending glassware 1,43m ² 1x20lt

Code	SUGGESTED ACCESSORIES
IMNM017503	PTFE Diaphragm pump MPC 601 T-4.5 m ³ /h-ultimate pressure <mbar 2-oil free
IMNM079980	PTFE Diaphragm pump MPC 601 Tp EX -4.5 m ³ /h- ultimate pressure <mbar 2- oil free-ATEX II 2G c IIB T4 X
SQEG034290	50 lt evaporation vessel
SQEG034291	100 lt evaporation vessel
SQEG034292	20 lt evaporation vessel
SQEG036866	20lt receiving vessel
SQEG034294	1.43 m ² glass exchanger
SQFW039025	TROLLEY for evaporating flask mounting and dismounting
JU 9.666.110	Chiller FL 11006—Julabo

ROTARY EVAPORATOR



STRIKE®

Technical features

Thermic Bath	
Working Range °C	[0; 150]
Accuracy °C	+/- 2
Resolution °C	0.1
Set point	YES (1°C step)
Type of control	PID
Maximum oscillation during checkout °C	+/- 3
Power resistor KW	8
Heater power density	3W/cm2
Over-temperature protection	YES
Temperature Sensor	Three-wire PT100
Level sensor	YES
Filling Level	Yes -Manual
Vapour Temperature	
Working Range °C	[0; 150]
Accuracy °C	+/- 2
Resolution °C	0.1
Temperature sensor	Three-wire PT100
Rotation	
Working Range Rpm	[5; 100]
Accuracy Rpm	+/- 2
Rotation speed reading	YES
Resolution Rpm	1
Engine 0,18KW, 380Vac	YES
Vacuum Control	
Working Range mbar	[0; 1000]
Accuracy mbar	±5mbar
Resolution mbar	1
Absolute vacuum reading	YES
Display	Digital
Vacuum regulation	YES
Lifting	
Lifting control ON/OFF	YES
Hydraulic lifting	YES

Interface	
PLC controlled	YES
Export data interface	YES
Remote control interface	YES
Alarms	
Thermal bath overheat	YES
Bath temperature exceeding set point	YES
Soft start rotation	YES
Rotation speed monitoring	YES
Security status (rotation, lifting, heating=off)	YES
Evaporation flask protection opening	YES
General	
100Lt evaporation flask	YES
50Lt evaporation flask	YES
20L evaporation flask	YES
20Lt collecting flask	2
cooler exchange surface (mq)	0.6/1.4/custom
Over-pressure Protection	YES
Protection with rupture disk	YES
Quick closing	YES
ATEX certification	YES
Dimensions (WxDxH mm)	1830x890x2110
Operation	
vapours cycle maximum temperature	YES
vapours cycle minimum temperature	YES
vapours cycle Temp range	YES
receipt/methods in memory	YES
recipes customization	YES
Data acquisition on PC	YES
Remote Control	YES
lowering bath in case of alarm	YES
Optional	
Plastic coated glassware	

*Strike 100 ATEX version is in compliance with the ATEX European Directives that regulate explosion-proof manufacturing materials. Strike 100 ATEX is T3 or T4 certified. T3 or T4 protection level can be chosen according to the applications needed.

000 «Диаэм»

www.dia-m.ru

Москва
ул. Магаданская, 7/3
тел./факс:
(495) 747-0508
sales@dia-m.ru

Новосибирск
пр. Акад.
Лаврентьева, 6/1
тел./факс:
(383) 328-0048
nsk@dia-m.ru

Казань
ул. Парижской
Коммуны, д. 6
тел./факс:
(843) 210-2080
kazan@dia-m.ru

Санкт-Петербург
ул. Профессора
Попова, 23
тел./факс:
(812) 372-6040
spb@dia-m.ru

Ростов-на-Дону
пер. Семашко, 114
тел./факс:
(863) 250-0006
rnd@dia-m.ru

Пермь
Представитель
в УФО
тел./факс:
(342) 202-2239
perm@dia-m.ru

Воронеж
тел./факс:
(473) 232-4412
voronezh@dia-m.ru